

MovingToBend.com

Sponsored by **BEND** Chamber

REFERENCE & REFERRAL GUIDE

MOVING TO BEND. MADE EASY

"Moving To Bend", sponsored by the Bend Chamber of Commerce, is the city's centralized hub for all things related to relocating to Bend, Oregon. With the increased popularity of Bend and Central Oregon and the city's rapid growth, Moving To Bend was designed by locals to help welcome you to the place we call "home". Our sole purpose is to provide a solid foundation of information in one place, making your move to Bend easier and less overwhelming. Gone are the days spending hours searching various websites to find answers to your relocation questions. Whether it's learning about the multitude of schools in the Bend-LaPine School District, becoming familiar with different neighborhoods or just simply looking for a local referral, Moving To Bend is where you will find it all!

TABLE OF CONTENTS

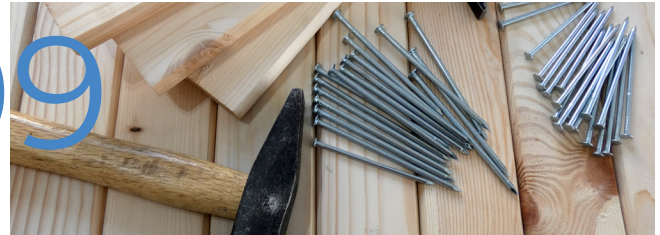
QUICK FACTS ABOUT BEND

08



HOUSEHOLD

09



GARDENING & LANDSCAPING

10



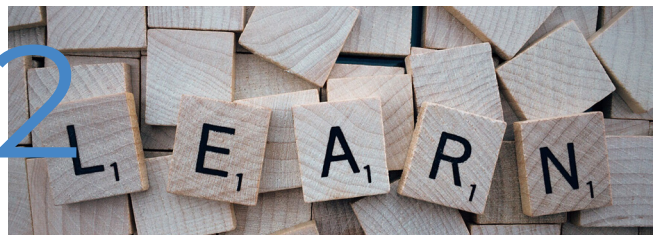
SPORTS & FITNESS

11



LESSONS

12



HEALTH & BEAUTY

13



TABLE OF CONTENTS



14

PETS



15

FINANCIAL SERVICES



16

AUTOMOTIVE



17

MOVING & STORAGE



18

SPORTING GOODS



19

HOME FURNISHINGS

TABLE OF CONTENTS

REAL ESTATE

20



DAYCARE & BABYSITTING

21



SPECIALTY

22



MEDICAL

23



DISPENSARIES

25



BREWERIES

26



TABLE OF CONTENTS



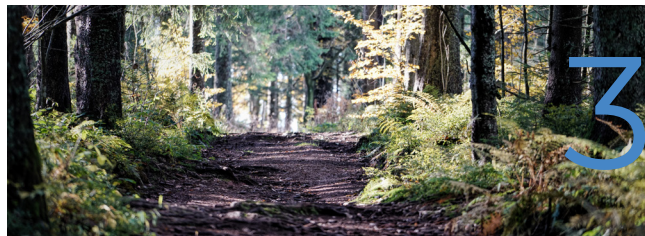
27 SCHOOLS



29 PLACES OF WORSHIP



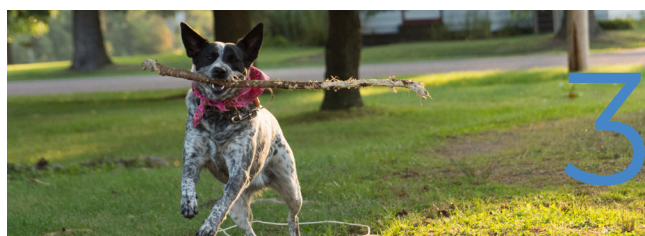
30 ATTRACTIONS



32 PARKS



33 TRAILS



35 OFF-LEASH DOG PARKS

TABLE OF CONTENTS

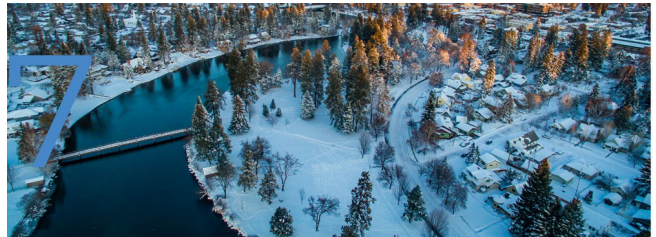
UTILITES

36



GENERAL

37



CONTACT US

38



QUICK FACTS ABOUT BEND, OREGON



01 BEND-LAPINE SCHOOL DISTRICT

Bend was rated one of the best places to live according to Outside magazine in 2016 & 2017. The Bend-Lapine School District has almost 40 incredible schools with an enrollment of over 18,375 students. It's the 5th largest school district in the State of Oregon.



02 MOUNT BACHELOR

Mount Bachelor is the largest Ski Resort in Oregon and one of the largest ski resorts in the U.S and it's located just 22 miles west of Bend! Top elevation of 9,065', a vertical drop of 3,365', 101 ski runs and 4,318 skiable acres.



03 DOG FRIENDLIEST CITY

People in Bend, Oregon love their dogs! In 2012, Bend was rated the Dog Friendliest City according to "Dog Fancy" magazine. Bend boasts over 51 miles of urban trails and over 13 off-leash areas nearby.



04 BREWERIES

Bend, Oregon is home to more than 24 craft breweries (and growing). In fact, Deschutes Brewery founded in 1988, is now the fifth-largest craft brewery in the world!

BEND, OREGON

Incorporated: 1905
Elevation: 3,623
Population: 90,000 (2016)
The State of Oregon has no sales tax.
It is one of two states where it's illegal to pump your own gas.

WEATHER

Moderate days and cool nights characterize Bend's year-round climate.
Due to the high altitude and clear air, nighttime temperatures average 30°F to 40°F below daytime highs.
Winter 46°F/20°F | Summer 82°F/37°F.

ONE OF THE BEST PLACES TO LIVE

Bend was rated one of the best places to live according to Outside magazine in 2016 & 2017.
Bend was rated one of the best places to live according to Money magazine.

HOUSEHOLD



SPECIALTY	NAME	PHONE	WEBSITE
House Cleaning			
Home Builder			
Plumbing			
Electrician			
Locksmith			
Painting			
Disaster Restoration			
Handyman			
Furniture Repair			
General Contractor			
Fencing			
Roofing			
Window Cleaning			
Gutter Cleaning			
Heating and Air (HVAC)			
Pest Control			
Carpet Cleaning			
Landscaping			
Irrigation			
Snow Removal			
Duct Cleaning			
IT services			
Audio / Video			
Furnishings			
Appliances			
Awnings			
Closets & Accessories			
Home Organization			

GARDENING & LANDSCAPING



SPECIALTY	COMPANY	PHONE	WEBSITE
Landscaping			
Irrigation			



SPORTS & FITNESS

ACTIVITY	COMPANY	PHONE	WEBSITE
Clubs & Gyms			
Clubs & Gyms			

LESSONS



ACTIVITY	COMPANY	PHONE	WEBSITE
Martial Arts			
Martial Arts			
Martial Arts			
Golf			
Golf			
Golf			
Driving			
Driving			
Driving			
Water Sports			
Water Sports			
Water Sports			
Ice Skating			
Ice Skating			
Ice Skating			
Skiing			
Skiing			
Skiing			
Snowshoeing			
Snowshoeing			
Musical Instruments			
Musical Instruments			
Musical Instruments			



HEALTH & BEAUTY

CATEGORY	COMPANY	PHONE	WEBSITE
Hair			
Nails			
Eye Lash Extensions			
MedSpa			
Massage Therapist			
Massage Therapist			
Massage Therapist			

PETS



SPECIALTY	COMPANY	PHONE	WEBSITE
Emergency Hospital			
Emergency Hospital			
Emergency Hospital			
Grooming			
Kennel/Boarding			

FINANCIAL SERVICES



SPECIALTY	COMPANY	PHONE	WEBSITE
Mortgage Brokers	Arbor Mortgage	541-323-0422	www.arbormg.com
Brokerage			
Wealth Management			
Financial Planning			
Investment Banking			
Capital Markets			
Car Insurance			
Home Insurance			
Life Insurance			
Sales and Trading			
Estate Planning			
Retirement Planning			
Financial Research			
Investment Management			



AUTOMOTIVE

SPECIALTY	COMPANY	PHONE	WEBSITE
Mechanic			
Dealership			
Dealership			

MOVING & STORAGE



SPECIALTY	COMPANY	PHONE	WEBSITE
Movers			
Storage			



SPORTING GOODS

SPECIALTY	COMPANY	PHONE	WEBSITE
Biking			
Biking			
Biking			
Ski & Snowboard			
Ski & Snowboard			
Ski & Snowboard			
Camping / Hiking			
Camping / Hiking			
Camping / Hiking			
Watersports			
Watersports			
Watersports			
Fishing			
Fishing			
Fishing			
Rock Climbing			
Rock Climbing			
Horseback Riding Tack			
Horseback Riding Tack			
Diving			

HOME FURNISHINGS



SPECIALTY	COMPANY	PHONE	WEBSITE
New Furniture			
New Furniture			
New Furniture			
Second-hand			
Second-hand			
Second-hand			
Accesories			
Accesories			
Accesories			
Flooring			
Flooring			
Flooring			
Lighting			
Lighting			
Lighting			
Appliances			
Appliances			
Appliances			
Plumbing Fixtures			
Plumbing Fixtures			



REAL ESTATE

SPECIALTY	COMPANY	PHONE	WEBSITE
Residential Brokers			
Residential Brokers			
Residential Brokers			
Residential Brokers			
Property Management			
Property Management			
Property Management			



DAYCARE & BABYSITTING

SPECIALTY	COMPANY	PHONE	WEBSITE
Baby Sleep Coach			
Swimming School			
Babysitting			
Babysitting			

SPECIALTY



SPECIALTY	COMPANY	PHONE	WEBSITE
Photographers			
Photographers			
Event Planners			
Cards & Stationary			

MEDICAL



SPECIALTY	COMPANY	PHONE	WEBSITE
Chiropractor			
Chiropractor			
Dentistry			
Doula			
Dermatology			



MEDICAL

SPECIALTY	COMPANY	PHONE	WEBSITE
Mental Health			
Obstetrics			
Obstetrics			
Ophthalmology			
Ophthalmology			
Orthodontics			
Orthodontics			
Orthopedics			
Orthopedics			
Pediatric Dentistry			
Pediatric Dentistry			
Pediatrician			
Pediatrician			
Physical Therapy			
Physical Therapy			
Podiatry & Orthotics			
Podiatry & Orthotics			
Psychiatry			
Psychiatry			
Rheumatology			
Sleep			
Speech Pathologist			
Urgent Care			
Urology			

DISPENSARIES

[illegible]



BREWERIES

SPECIALTY	COMPANY	PHONE	WEBSITE

SCHOOLS



ELEMENTARY SCHOOLS	ADDRESS	PHONE
Amity Creek Magnet @ Thompson	437 NW Wall Street Bend, OR 97703	541 355-2800
Bear Creek Elementary	51 SE 13th Street Bend, OR 97701	541 355-1400
Buckingham Elementary	62560 Hamby Road Bend, OR 97701	541 355-2600
Elk Meadow Elementary	60880 Brookwood Blvd Bend, OR 97702	541 355-1500
Ensworth Elementary	2150 NE Daggett Lane Bend, OR 97701	541 355-1600
High Lakes Elementary	2500 NW High Lakes Loop Bend, OR 97703	541 355-1700
Highland Magnet @ Kenwood	701 NW Newport Avenue Bend, OR 97703	541 355-1900
Juniper Elementary	1300 NE Norton Bend, OR 97701	541 355-1800
Lava Ridge Elementary	20805 Cooley Road Bend, OR 97701	541 355-2400
North Star Elementary	63567 NW Brownrigg Ln Bend, OR 97703	541 355-2300
Pine Ridge Elementary	19840 Hollygrape Street Bend, OR 97702	541 355-2700
Ponderosa Elementary	3790 NE Purcell Blvd Bend, OR 97701	541 355-4300
R.E. Jewell Elementary	20550 Murphy Road Bend, OR 97702	541 355-2100
Silver Rail Elementary	61530 SE Stone Creek Lane Bend, OR 97702	541 355-2900
Westside Village Magnet @ Kingston	1101 NW 12th Street Bend, OR 97703	541 355-2000
William E. Miller Elementary	300 NW Crosby Drive Bend, OR 97703	541 355-2500
MIDDLE SCHOOLS	ADDRESS	PHONE
Cascade Middle	19619 Mountaineer Way Bend, OR 97702	541 355-7000
High Desert Middle	61000 Diamondback Lane Bend, OR 97702	541 355-7200
Pacific Crest Middle	3030 NW Elwood Lane Bend, OR 97703	541 355-7800
Pilot Butte Middle	1501 NE Neff Bend, OR 97701	541 355-7400
REALMS	63175 OB Riley Road Bend, OR 97703	541 355-4900
Sky View Middle	63555 18th Street Bend, OR 97701	541 355-7600
Westside Village Magnet @ Kingston	1101 NW 12th Street Bend, OR 97703	541 355-2000



SCHOOLS

HIGH SCHOOLS		ADDRESS	PHONE
Bend Senior High		230 NE 6th Street Bend, OR 97701	541 355-3700
Marshall High		1291 NE 5th Street Bend, OR 97701	541 355-3500
Mountain View High		2755 NE 27th Street Bend, OR 97701	541 355-4400
REALMS High		20730 Brinson Blvd • Bend, OR 97701	541 355-5500
Skyline High School		20730 NE Brinson Blvd, Bend, OR 97701	541-355-5400
Summit High		2855 NW Clearwater Drive Bend, OR 97703	541 355-4003
CHARTER SCHOOLS & ADDITIONAL PROGRAMS		ADDRESS	PHONE
Bend International School K-8		63020 OB Riley Road Bend, OR 97703	541 797-7038
Luna		520 NW Wall Street • Bend, OR 97703	541 355-1057
Dessert Sky Montessori (K-3)		150 NE Bend River Mall Suite 260 • Bend, OR 97703	541 350-2090
INDEPENDENT SCHOOLS		ADDRESS	PHONE
Waldorf School of Bend K-8		2150 NE Studio Rd #2 Bend, OR 97701	541 330-8841
Seven Peaks School Pre K-8		19660 Mountaineer Way Bend, OR 97702	541 382-7755
Trinity Lutheran School Pre K-12		2550 NE Butler Market Rd Bend, OR 97701	541 382-1850
Eastmont School Pre K-12		62425 Eagle Rd Bend, OR 97701	541 382-2049
Saint Francis of Assisi Catholic School Pre S-5		2450 NE 27th St Bend, OR 97701	541 382-4701
New Leaf Academy Girls Therapeutic Boarding School (Ages 10-15)		63050 Dickey Rd Bend, OR 97701	541 617-8989
Cascades Academy Pre K-12		19860 Tumalo Reservoir Rd Bend, OR 97701	541 382-0699
Morning Star Christian School Pre K-8		19741 Baker Rd Bend, OR 97702	541 382-5091
Three Sisters Adventist Christian School K-8		21155 Tumalo Rd Bend, OR 97701	541 389-2091
Samara Learning Center Special Needs (Grades 4-8)		230 NE 9th St, Bend, OR 97701	541 419-3324
COLLEGES AND UNIVERSITIES		ADDRESS	PHONE
Central Oregon Community College		2600 NW College Way, Bend, OR 97703	541 383-7700
Oregon State University		1500 SW Chandler Ave, Bend, OR 97702	541 322-3100

PLACES OF WORSHIP



NAME	DENOMINATION	PHONE	WEBSITE / ADDRESS
Place			
Place			
Place			
Place			
Place			
Place			
Place			
Place			
Place			
Place			
Place			
Place			
Place			



ATTRACTIONS

ATTRACTION	ADDRESS	PHONE	WEBSITE
Deschutes Historical Museum	129 NW Idaho Ave Bend, OR 97703	541 389-1813	www.deschuteshistory.org
Erickson Aircraft Collection	2408 NW Berg Dr Madras Municipal Airport	541 460-5065	www.ericksoncollection.com
High Desert Museum	59800 South Hwy 97 Bend, OR 97702	541 382-4754	www.highdesertmuseum.org
L & S Gardens	50808 Huntington Rd La Pine, OR 97739	541 536-2049	www.lsgardens.com
Newberry National Volcanic Monument	Deschutes National Forest	541 383-5700	www.fs.usda.gov
Oregon Observatory at Sunriver	57245 River Rd Sunriver, OR 97707	541 598-4406	www.oregonobservatory.org
Petersen Rock Garden & Museum	7930 SW 77th St. Redmond, OR 97756	541 382-5574	www.redmond.gov
Sunriver Nature Center	57245 River Rd Sunriver, OR 97707	541 539-4394	www.sunrivenaturecenter.org
The A.R. Bowman Memorial Museum	246 North Main St Prineville, OR 97754	541 447-3715	www.bowmanmuseum.org
The Art of Alfred A. Dolezal Gallery	7525 Falcon Crest Dr Redmond, OR 97756	541 526-1185	www.alfreddolezal.com
The Museum at Warm Springs	2189 Hwy 26 Warm Springs, OR 97761	541 553-3331	www.museumatwarmsprings.org

PARKS



PARK	ADDRESS
Al Moody	2225 NE Daggett Ln
Alpine	SW Swarens Ave/Century Dr
Aubrey Village	3015 NW Merchant Way
Bend Senior Center	1600 SE Reed Market Rd
Big Sky Park	21690 NE Neff Rd
Blakely Park	1155 SW Brookwood Blvd
Boyd Park	20750 NE Comet St
Brooks Park	35 NW Drake Rd
Columbia Park	264 NW Columbia St
Compass Park	2500 NW Crossing Dr
Davis Park Site	Revere St (end)
Deschutes River Prail	N/A
Dohema River Access	NW Drake & Dohema St
Drake Park & Mirror Pond	777 NW Riverside Blvd
Farewell Bend Park	1000 SW Reed Market Rd
First Street Rapids Park	1980 NW First St
Foxborough Park	61308 Sunflower Ln
Gardenside Park	61750 Darla Pl
Harmon Park	1100 NW Harmon Rd
Harvest Park	63240 Lavacrest St
High Desert Park Site	60895 27th St
Hillside I Park	2050 NW 12th St
Hillside II Park	910 NW Saginaw Ave
Hollinshead Park	1235 NE Jones Rd



PARKS

PARK	ADDRESS
Hollygrape Park	19489 SW Hollygrape St
Juniper Park	800 NE 6th
Larkspur Park	1700 SE Reed Market Rd
Lewis & Clark Park	2520 NW Lemhi Pass Dr
McKay Park	166 SW Shelving Hixon Dr
Miller's Landing Park	55 NW Riverside Blvd
Mountain View Park	1975 NE Providence Dr
O.B. Riley Ranch Reserve	19975 Glen Vista Rd
Orchard Park	2001 NE 6th St
Overturf Park	475 NW 17th St
Pacific Park	200 NW Pacific Park Ln
Pilot Butte Neighborhood Park	1310 NW Why 20
Pine Nursery Park	3750 NE Purcell Blvd
Pine Ridge Park	61250 Linfield Ct
Pioneer Park	1525 Wall St
Ponderosa Park	225 SE 15th St
Providence Park	1055 NE Providence Dr
River Canyon Park	61005 Snowbrush Dr
Riverbend Park	799 SW Columbia St
Riverview Park	225 NE Division St
Sawyer Park	62999 O.B. Riley Rd
Shevlin Park	18920 Shevlin Park Rd
Skyline Sports Complex	19617 Mountaineer Way
Summit Park	1150 NW Promontory Dr

TRAILS



TRAIL	ADDRESS & DISTANCE FROM DOWNTOWN
Alpine Trail	Mt. Washington/Skyline Park to Tetherow 3.5 Miles
Big Sky Park Trail	Through Big Sky Park to Neff Rd 0.8 Miles
Brooks-Scanlon Rail Trail	Shevlin Park/Phil's Trailhead to City of Sisters 27 Miles
Cascade Highlands Trail	Overturf Park to Phil's Trailhead 4.6 Miles
Central Oregon Canal Trail	Reed Market Rd to Deschutes River Trail 3.5 Miles
COCC-Shevlin Park Trail	Mt. Washington to Shevlin Park 1.8 Miles
Colorado Trail	Haul Rd Trail to McKay Park 1.1 Miles
Coyner Trail	Ponderosa Park to Juniper Park 0.8 Miles
Deschutes River Trail (North Reach)	Tumalo to Tumalo State Park 3.6 Miles
Deschutes River Trail (Awbrey Reach)	Putnam Rd to Sawyer Park 3.9 Miles
Deschutes River Trail (River Run Reach)	Sawyer Park to First St Rapids Park 1.3 Miles
Deschutes River Trail (Pioneer Reach)	First St Rapids Park to Columbia Park 2.4 Miles
Deschutes River Trail (Old Mill Reach)	Columbia Park to Haul Rd Trail 3.7 Miles
Deschutes River Trail (South Canyon Reach)	Haul Rd Trail to River Rim Park 4.3 Miles
Discovery Trail	Shevlin Park Rd to Skyliners Rd 0.7 Miles
East Bend Canal Trail	27th St to East Bend Canal 1.1 Miles



TRAILS

TRAIL	ADDRESS & DISTANCE FROM DOWNTOWN
Haul Road Trail	Bill Healy Bridge to USFS Boundary 3.3 Miles
Larkspur Trail (North)	US20 Underpass to Stover Park 2.3 Miles
Larkspur Trail (South)	Larkspur Park to US20 Underpass 1.8 Miles
North Parkway Trail	Butler Market Rd to Empire Ave 0.5 Miles
North Unit Canal Trail	Deschutes River to Canal Row Park 1.5 Miles
O.B. Riley Ranch Reserve	19975 Glen Vista Rd 1.57 Miles
Pilot Butte Canal Trail	Canal Row Park to Pine Nursery Park 1.7 Miles
Pine Nursery Park Trail	Pine Nursery Park (Loop Trail) 1.9 Miles
Shevlin Park Area Trails	Shevlin Park (above Canyon & Along Tumalo Cre 9.8 Miles
Sylvan to Summit Trail	Sylvan Park to Summit Park (On Awbrey Butte) 0.6 Miles
Tetherow Trail	Along Tetherow Resort Roads 3.3 Miles
Three Pines Trail	Three Pines Park to Shevlin Commons 0.2 Miles
West Bend Trail	17th St to USFS Rd 4606 (Phil's Trailhead) 2.7 Miles

OFF-LEASH DOG PARKS



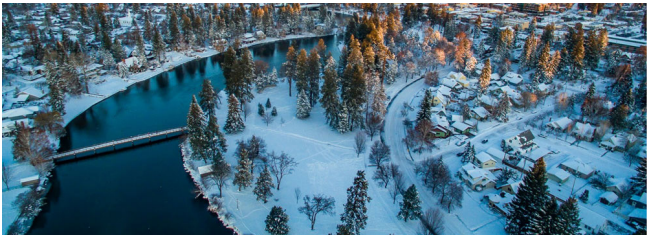
PARK	ADDRESS
Big Sky	21690 Neff Rd
Riverbend Park	799 SW Columbia St (River Access Available)
Ponderosa Community Park	225 SE 15th St
Pine Nursery Community Park	NE Purcell Rd
Hollinshead Community Park	1235 NE Jones Rd
Overturf Butte Reservoir	Skyliner Summit Loop
Aubrey Reservoir	NW 10th St and Trenton



UTILITIES

CATEGORY	COMPANY	PHONE
Cable/Satellite TV	Bend Broadband	541 382-5551
Cable/Satellite TV	Direct TV	541 280-4388
Cable/Satellite TV	Dish Network	800 976-3077
Electric/Power	Central Electric	541 389-1980
Electric/Power	Midstate Electric	541 536-2126
Electric/Power	Pacific Power	888 221-7070
Licenses	Deschutes County Dog Licensing	541 388-6637
Licenses	DMV	541 388-6322
Licenses	Fishing/Hunting	503 947-6101
Gas	Cascade Natural Gas	888 522-1130
Garbage/Recycling	Bend Garbage & Recycling	541 382-2263
Garbage/Recycling	Cascade/Kelvlic Disposal	541 382-6660
Garbage/Recycling	Deschutes Recycling	541 388-1910
Telephone	Bend Broadband	541 382-5551
Telephone	Bend Tel Inc	541 389-4020
Telephone	Century Link	855 707-4993
Telephone	Qwest	800 244-1111
Water/Sewer	Avion	541 382-5342
Water/Sewer	Cimarron City Water Co.	541 389-7480
Water/Sewer	City of Bend	541 388-5515

GENERAL



ORGANIZATION	ADDRESS	PHONE
Bend Police Dept	555 NE 15th St Bend, OR 97702	541 693-6911
Bend Fire Dept	1212 SW Simpson Ave Bend, OR 97702	541 322-6300
Bend DMV	63085 N Hwy 97 #110 Bend, OR 97703	541 388-6322
St. Charles Hospital	2500 NE Neff Rd Bend, OR 97702	541 706-5800
Bend Board of Education	520 NW Wall St Bend, OR 97701	541 355-1000
Bend Chamber of Commerce	777 NW Wall St #200 Bend, OR 97701	541 382-3221
Bend Public Library	601 NW Wall St Bend, OR 97701	541 617-7050
Bend City Hall	710 NW Wall St Bend, OR 97701	541 388-5580
USPS	2300 NE 4th St, Bend, OR 97701	800-275-8777



MovingToBend.com

Sponsored by **BEND** *Chamber*

CONTACT US

Bend, Oregon
541-668-5076
contact@MovingToBend.com
www.MovingToBend.com



Follow us on social media

